

EKFI – Exchange Knowledge for Future Innovation

Educational & technical aspects of the platform

May 2019, Athens



Scope

- The platform is designed to exchange (learning) material between platform participants

Goals

- Improve sharing of knowledge of erasmus projects
- Create an active sharing community

Important details

- It is a limited access platform
- Risks of copyright infringement must be mitigated
- Content management effort by project members must be minimised
- Guaranteed technical lifetime at least 5 years after end of project



EKFI

Exchange Knowledge for Future Innovation



Erasmus+

European Qualifications Framework (EQF)

The EQF uses 8 reference levels based on learning outcomes. The EQF shifts the focus from input (lengths of a learning experience, type of institution) to what a person holding a particular qualification actually knows and is able to do. By shifting the focus to learning outcomes it helps to:

- support a better match between the needs of the labour market (for knowledge, skills and competences) and education and training provision
- facilitate the validation of non-formal and informal learning
- facilitate the transfer and use of qualifications across different countries and education and training systems



EKFI

Exchange Knowledge for Future Innovation



Erasmus+

The 8 reference levels of EQF (1/2)

- **Level 1:** Basic general knowledge
- **Level 2:** Basic factual knowledge of a field of work or study
- **Level 3:** Knowledge of facts, principles, processes and general concepts, in a field of work or study
- **Level 4:** Factual and theoretical knowledge in broad contexts within a field of work or study

The 8 reference levels of EQF (2/2)

- **Level 5:** Comprehensive, specialised, factual and theoretical knowledge within a field of work or study and an awareness of the boundaries of that knowledge
- **Level 6:** Advanced knowledge of a field of work or study, involving a critical understanding of theories and principles
- **Level 7:** Highly specialised knowledge, some of which is at the forefront of knowledge in a field of work or study, as the basis for original thinking and/or research

Critical awareness of knowledge issues in a field and at the interface between different fields

- **Level 8:** Knowledge at the most advanced frontier of a field of work or study and at the interface between fields



EKFI

Exchange Knowledge for Future Innovation



Erasmus+



European
Qualifications
Framework



THE EUROPEAN QUALIFICATIONS FRAMEWORK FOR LIFELONG LEARNING

http://ec.europa.eu/dgs/education_culture



Education
and
Training



EKFI

Exchange Knowledge for Future Innovation



Erasmus+

The main objective of the project EKFI is to create an Exchange platform to facilitate the availability of innovative learning and research material, map the competence needs and match those needs with the appropriate learning/research module(s) on the web-based platform.

The uploading process of the material will be supported by the Intake application (O2) where the learning/research material will be described and meet educational standard/formats in order to pass the initial requirements.



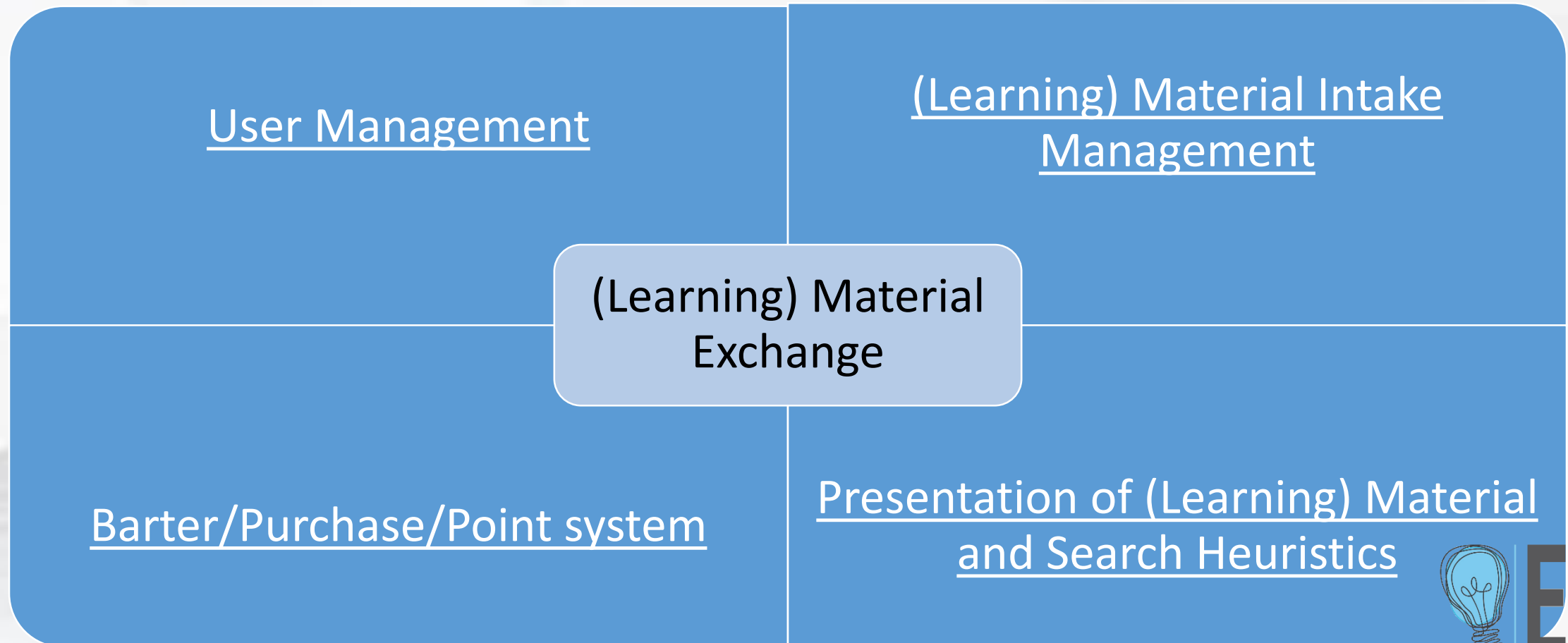
EKFI

Exchange Knowledge for Future Innovation



Erasmus+

Model description



EKFI

Exchange Knowledge for Future Innovation

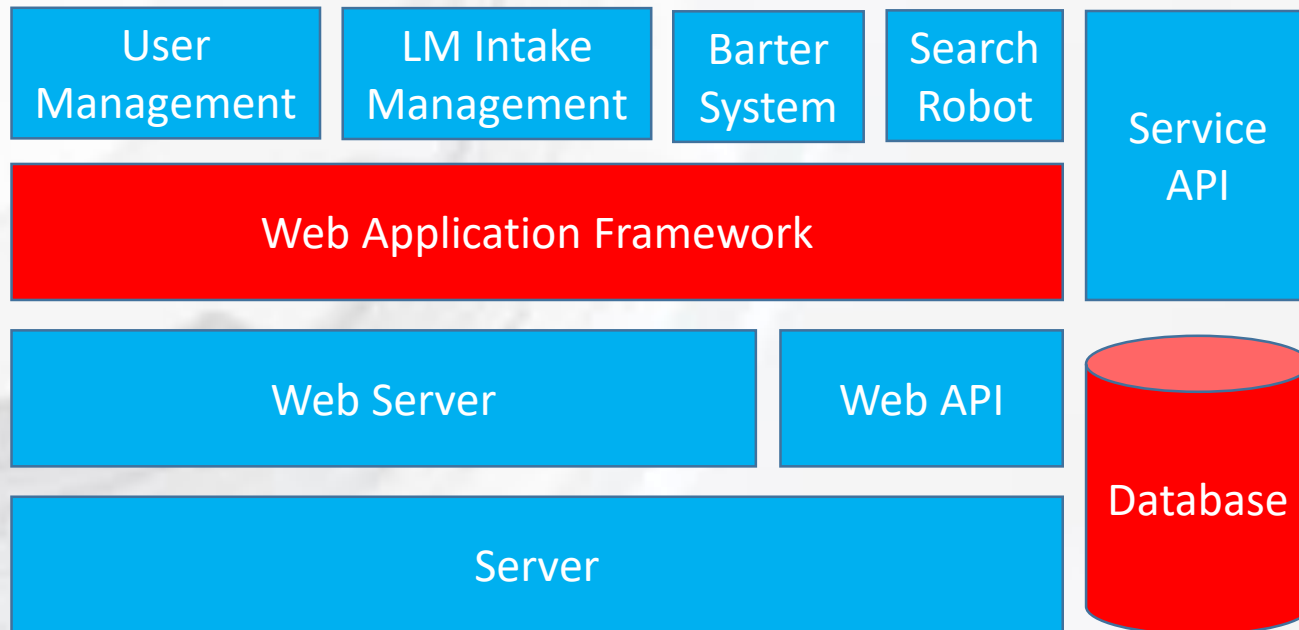


8

Erasmus+

Platform Overview

- Web based
- Modular, scalable



4 main modules

- User management
- (Learning) material Intake Management
- Barter System
- Search Robot



EKFI

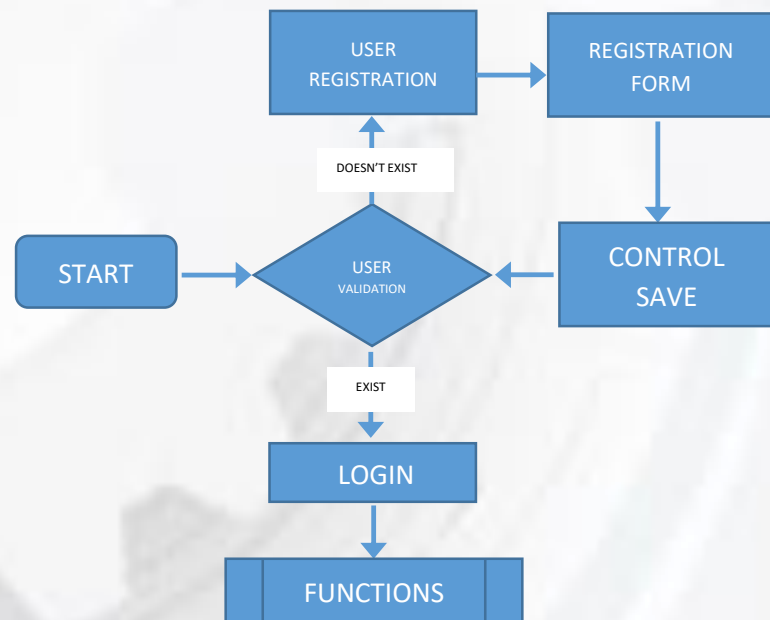
Exchange Knowledge for Future Innovation



9

Erasmus+

Intake Application – General



- Users need to be registered
- Cross platform design for user registration
- GDPR compliant
- Groups of users with different rights (users, admins, evaluators)
- Levels and reward badges

Material Upload Fields 1/2

Metadata	Type	Required for Robot Search
Title	Text field	NO (keyword search)
Learning Outcomes (knowledge)	Text area	NO (keyword search)
Target group	Drop down list	YES
Type	Drop down list	YES
Abstract	Text area	NO (keyword search)
Estimated study time	Text field	NO (keyword search)
Required Software	Yes/No	YES
Distant Education	Yes/No	YES
Teacher Oriented	Yes/No	YES



Exchange Knowledge for Future Innovation



11

Erasmus+

EKFI

Material Upload Form Basic Fields 2/2

Metadata	Type	Required for Robot Search
Origin	Drop down list	YES
Extended Description	Text area	NO (keyword search)
Included exercises	Yes/No	YES
Bibliography	Text area	NO (keyword search)
Editor / editors	Text field	NO (keyword search)
Competencies	Drop down list	YES
Copyright	Yes/No	YES
Type of file	Drop down list	YES
Size of file	Text field	NO (keyword search)
Includes subfiles (if zip)	Yes/No	NO



Exchange Knowledge for Future Innovation



12

Erasmus+

EKFI

Learning Material Intake Management – Upload Form Mockup

The form is divided into several sections:

- Text field:** Labels for First Name, Last Name, Address #1, Address #2, City, State, and Country, each with a corresponding input box.
- drop-down:** A dropdown menu for 'Type of material' and a dropdown for 'Title'.
- radio buttons:** A group of radio buttons for 'File type (check one)' with options: Doc, Pdf, Ppt, Zip, and Avi.
- check boxes:** A group of checkboxes for 'Target Group (check all that apply)' with options: Teacher, Student, Professional, Academic, and Individual.
- text area:** A large text area for 'Abstract:'.
- form button:** Two buttons at the bottom: 'Submit' and 'Cancel'.



EKFI

Exchange Knowledge for Future Innovation



13
Erasmus+

Barter/Purchase/Point system

- Barter system:
Own content/contribution is rated by peers and give access to content
- Purchase system:
Buying content using online payments providers
- Point system:
Activity on the system can credit predetermined points which you can use to purchase content



EKFI

Exchange Knowledge for Future Innovation



14

Erasmus+

Presentation of (Learning) Material and Search

- 3 types of search system: Simple search – advanced search – directories
- Search is done with keywords
- The search engine finds and sorts related entries
- The order in which the terms are typed affects the search results
- In advanced search we can use logical terms like and, or, not
- Searching for certain types of files will also be possible



EKFI

Exchange Knowledge for Future Innovation



15

Erasmus+